



ISO 9001 Certified



A World Class Supplier of

---

**Precision Machined Products & Services**

[www.Amerascrew.com](http://www.Amerascrew.com)



Located in Mansfield, Ohio, Amerascrew, Inc. is a leading manufacturer of precision screw machine products and precision machine parts. Our steadfast commitment to quality products, manufacturing excellence and superior customer service has made Amerascrew the company of choice for over 95 years.

Amerascrew has over 42,000 square feet of modern, well-lit, clean facility that houses a complete line of 5-axis CNC's, multiple and single spindle automatics, CNC machining centers and other secondary equipment. Our operation provides for optimum associate participation, quality and safety.

Amerascrew produces precision parts from a wide variety of materials. We routinely machine anything from free cutting brass to aerospace metals, often holding tolerances of .0005" or less.

From simple to complex, prototype to high production quantities, Amerascrew will consistently manufacture your parts to tight tolerances with consistent accuracy, on time, and on budget.

Amerascrew has the experience to analyze your needs, find options and alternatives to keep costs down, and ensure that optimal production methods are used. To increase part productivity and reduce customer part cost, we often produce in-plant customized equipment and special fixtures. For example, a completed part may require a finishing operation, a small stamping, or part assembly. Just ask about our total product processing.



## Commitment to Quality

*"It is the policy of Amerascrew to achieve total quality performance. Amerascrew is committed to emphasizing continuous improvement in order to better meet the requirements of internal and external customers. We stress that all employees participate, to ensure, to the best of our ability, a quality product is furnished to customer specification, satisfaction and requirements."*

**President John R. Keith**

## Quality

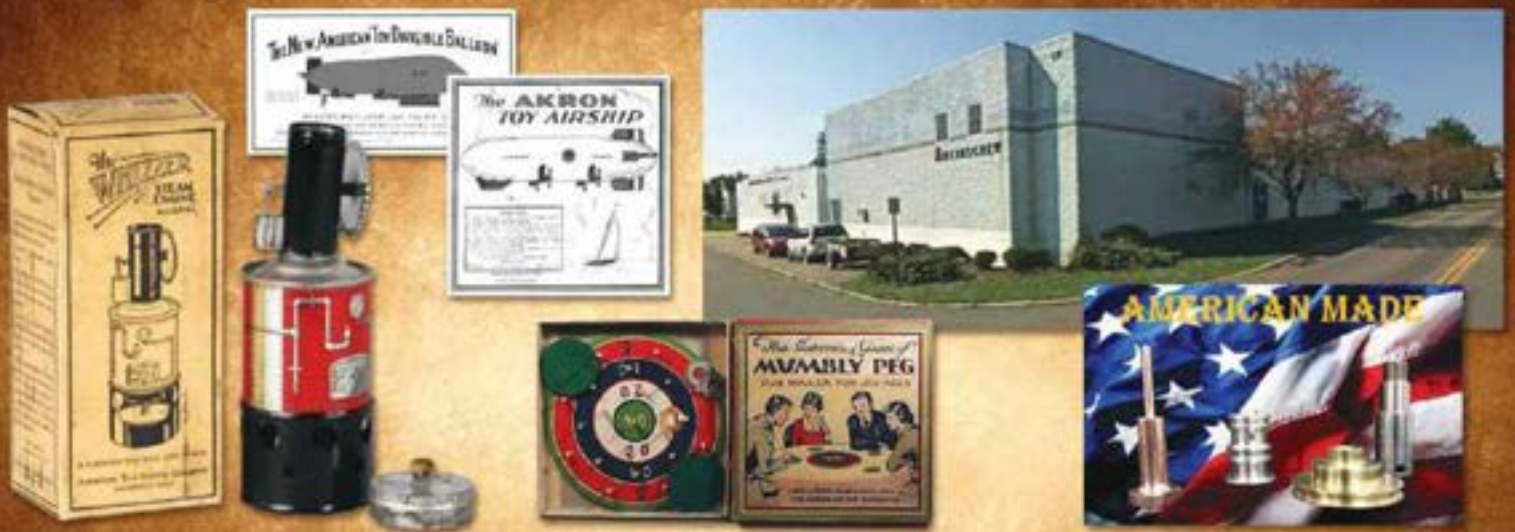
Since the company was founded, quality has been the driving force behind our processes. Our parts undergo stringent inspection and quality control processes and our quality management system is certified to ISO 9001 by Perry Johnson Registrars. Furthermore, we are continually evaluating our operations and investing in technology to assure the highest levels of customer satisfaction and the production of precise, quality products.

## Engineering Know-How

Consulting with our technical team provides our customers with distinct advantages. Extensive design and engineering experience coupled with state-of-the-art CAD/CAM software ensures that reliable estimates are given and optimal production methods are used. From part concepts to finished products, Amerascrew has the know-how to deliver bottom line savings that will increase your profits.



**419.522.2232 • [www.Amerascrew.com](http://www.Amerascrew.com)**



Amerascrew, Inc. has a long and rich history. Established in 1920, the company originally manufactured children's toys and manicuring machines under the name of The American Toy Airship Company. As the economy changed, the demand for precision screw machine products grew, and the direction of the company changed. By 1935, the company was a full-fledged screw machine shop and was renamed American Electrical Products Co. In 2000, the name was changed to Amerascrew, Inc., to better identify their role as a leading manufacturer of precision screw machine products and precision machined parts.

Amerascrew is a hometown, third-generation, family-owned business with a solid reputation for quality and excellence and an absolute commitment to selling to the customer in the most cost-effective way. We take pride in the fact that we were not only the first CNC screw machine shop in Mansfield, but also one of the first in the country to become QS-9000 certified.

We are proud of our reputation and confident that we have the know-how, the hands-on experience, the technological resources, and the people to handle all your screw machine product and precision machine part manufacturing needs.

**Amerascrew has the experience and capabilities to run virtually any type of material...**

- Aluminum
- Brass
- Carbon Steels
- Copper Alloys
- Plastics
- Stainless Steels
- Titanium
- Tool Steel
- Aircraft Alloys
- And Many More



# Amerascrew specializes in precision part manufacturing in a variety of shapes, sizes and materials.



Hex stainless steel cover screws, steel cap-nuts, and special screws produced on our Swiss conventional CNC's and multiple spindle Acmes

Center post for high pressure oil filter, drilled on CNC machining center



Stainless steel .001" tolerance on O.D., 16 finish, teflon coated

16 micro finish angle blended into radius on end



Aluminum valve with 32 finish and stamp of company logo



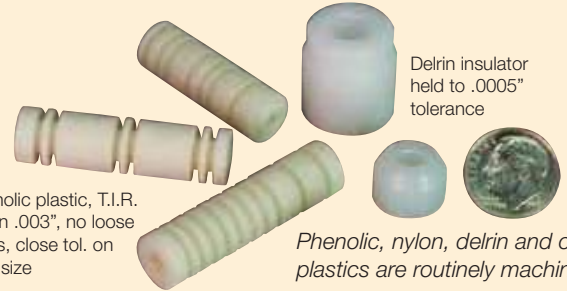
Fine threads and finishes are required on these small parts.

Silver-plated copper and brass parts for the aircraft industry made complete on 5-axis CNC's



Silver plated, copper part with 1/4-64 threads on O.D. & 2-56 tap for I.D.

Copper terminal, silver plated



Delrin insulator held to .0005" tolerance

Phenolic plastic, T.I.R. within .003", no loose fibres, close tol. on hole size

Phenolic, nylon, delrin and other plastics are routinely machined.



Deep hole broach, milled square, .0005" tolerance held on O.D. and grooves



Titanium dental implants with internal broaching and fine threads made to exacting tolerances complete on Swiss CNC's



Rolled 3/4-16 thread, oil fed roller burnished, .0005" tolerance

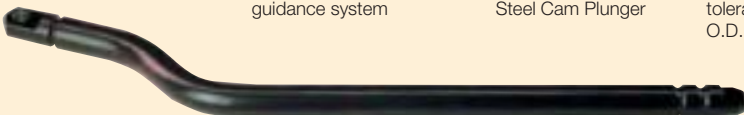


32 micro seat and cross hole complete off Acme



32 micro finish on close tolerance angle on electro-magnetic iron

Steel brake handle bent in-house with flats oriented to +/- 1 degree



32 finish, faced flat .0005", used in a jet guidance system



1-3/8" diameter by 2-1/2" long Steel Cam Plunger



Deep hole broach, milled square, .0005" tolerance held on O.D. and grooves.

Precision parts manufactured for the train and truck industry



360 brass valve stem, .001" tolerance

Navel brass check valve with a .001" tolerance

## Automatic Operations

Amerascrew has the equipment to carry out any project quickly and economically, without sacrificing quality. Our 5-axis CNC's enable us to drop off complex parts complete, reducing costly setups. Our Brown & Sharp single spindle automatics with Lipe magazine bar feeds optimize production for a reduced cost, and our Acme Gridley multiple spindle automatics produce larger volumes at a competitive price.

## Finishing & Secondary Operations

Our cellular approach to secondary operations is greatly enhanced by our own wide range of equipment. Our vertical CNC machine centers are augmented with a full compliment of Snow tappers, production mills, drill presses, speed lathes, centerless grinding and vibratory finishing.

## Stamping

Amerascrew's stamping department, with presses up to 60 ton capacity, gives us added functionality as well as bending or swedging. Grabs, palm buttons and light curtains allow us to set up jobs with high levels of safety and efficiency.

## Assemblies

In addition to the manufacturing phases of our operations, we also assemble products from simple assembly of silver rivets and stampings, to complex assembly of valves that may require a multitude of manufactured parts.

We also make most of the components that go into the assembly, giving us uniquely diverse skills in building, testing and packaging, often resulting in cheaper production, faster turnaround, and a higher quality product.



Brass adapter with deep trepan, four off-center holes and a 6-32 thread



Chrome plated zinc die cast button machined for truck brakes



2024 aluminum check valve with a 50 micro finish and black anodized



Electronic throttle shaft milled to a centerline of .002" and a T.I.R. of .0005"



Steel valve piston with a T.I.R. of .005", a 32 micro seat and 50 micro for the "O"-ring grooves



High volume steel nut run on an Acme Gridley, plated and nylon patched



To increase part production of this valve, a customized machine (shown on the left) was designed and constructed in-house to eliminate three operations. The machine was used to drill three holes, create a work cell, and then functioned as the primary work station to complete the part.



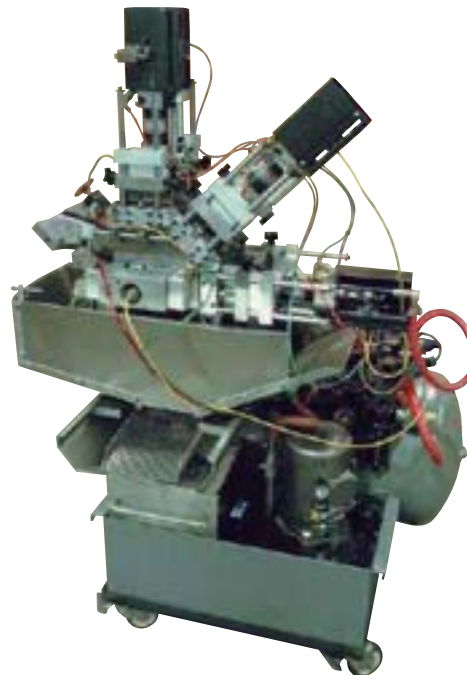
Stamped parts



Assembled parts



18" chrome plated handle with a brazed roller



Amerascrew is a very diverse company. We manufacture parts and products from a wide variety of materials for endless applications, and we work across a wide range of industries including:

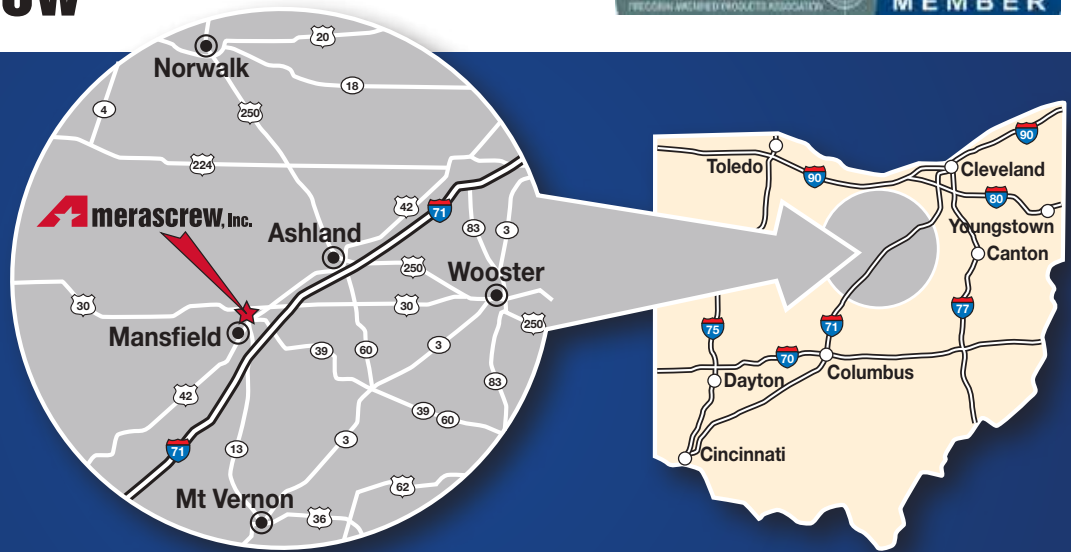
- Aerospace
- Automotive
- Ball Point Pen Tips
- Casket Manufacturing
- Commercial Lighting
- Commercial Pumps
- Consumer Products
- Entertainment
- Food and Beverage
- Lawn and Garden
- Meat Cutting
- Mining
- Photography
- Precision Dental
- Recreational Equipment
- Trains/Railroad
- Vehicle Brake Systems
- And Many More



Amerascrew, Inc. is a Drug-Free Workplace



653 Lida Street  
P.O. Box 1407  
Mansfield, Ohio 44901  
Ph: 419.522.2232  
Fax: 419.525.4165  
[www.Amerascrew.com](http://www.Amerascrew.com)



419.522.2232 • [www.Amerascrew.com](http://www.Amerascrew.com)